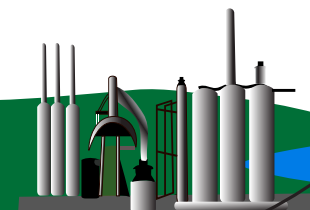


# SPEC SHEET



PALISADES  
MIDATLANTIC



Bridging the Lehigh Valley and Palisades-New Jersey Regions



## EVENT LOCATION:

Mountain View  
Chalet Restaurant  
154 New Jersey 173  
Asbury, NJ

[Click here](#) for directions:

## SCHEDULE:

Board Meeting 4:00-5:30  
Networking 5:30-6:00  
Dinner & Presentations 6:00-7:30

## COST FOR DINNER:

With RSVP by 9/13: \$50  
At-door: \$55  
Unemployed SPE member  
with RSVP: \$30  
Students with RSVP: \$15  
RSVP for the meeting by Nov. 16 to [info@  
spe-pnj.org](mailto:info@spe-pnj.org) or Pete Hayles, 732-569-2368.

## COVID SAFETY GUIDELINES:

If you have any symptoms of COVID-19 or are not feeling well, please do not attend the meeting. If you are not fully vaccinated, please take a test to screen for COVID-19 within 3 days of the meeting and wear a mask (while not eating). Masks are optional for vaccinated individuals.

## UPCOMING DATES

### 2022

January 20	Section Meeting
March 24	Section Meeting
April 21	Section Meeting
May 19	Awards Night

## SPE PALISADES-MIDATLANTIC SECTION MEETING

Thursday, November 18, 2021  
Mountain View Chalet Restaurant

### Presentation:

How PET Graft Copolymers Can Improve Chemical Resistance and Achieve Sustainability in Medical, CE, Electronics Enclosure and Other Industries

Presenter: Rick Wilson, *PolyVisions*

PolyVision's DuraPET can replace existing ABS PC/ABS and other engineered alloys in existing applications. The material can meet requirements for impact, chemical resistance, flame retardancy, high UV resistance, and high physical requirements. This material can also be produced using PCR PET and achieve virgin engineering properties.

*Presentation:* Rick Wilson is the Sales Engineer for PolyVisions Inc. PolyVisions is a custom compounder that specializes in reactive extrusion techniques. Rick has held several engineering management roles through his 37-year career in the plastics industry. He specializes in material, plastic processing and design. He is very involved in the SPE and at one time was on the Executive Board as an Executive VP. He is a 1985 graduate of the University of Massachusetts Lowell with a degree in Plastics Engineering.

## WANT TO BECOME A SECTION MEMBER?

If you're receiving this newsletter regularly, you probably are on our membership list. But if not, if you're already an SPE member, [click here](#) to add a geographical section to your SPE membership. If you want to join SPE as a member, [click here](#), and then choose Palisades MidAtlantic as your section membership. Our section members are also active in SPE Technical Divisions, such as the [Vinyl Plastics Division](#), the [Thermoplastic Materials and Foams Division](#), and the [Extrusion Division](#), among others. Check out all the divisions [here](#).

## **INTRODUCING THE PALISADES-MIDATLANTIC SECTION VOLUNTEER LEADERS**

As our Section President, Arya Tewatia, said in his introductory President's Message, we are welcoming all members of the former Lehigh Valley and Palisades-New Jersey Sections to our new, merged section that launched in July this year. We have many dedicated and active members serving as officers, directors, and committee members, and we are always looking for more. If you want to get involved, email us at [info@spe-pnj.org](mailto:info@spe-pnj.org).

In this newsletter, we introduce a few volunteers who are new to their positions: President Arya Tewatia (formerly the vice-president of the Palisades-New Jersey Section), first Vice-President Paul Brigandi (formerly of the Lehigh Valley Section), and our incoming 2023-24 class of directors: Art Finkle, Patrick Kelley, and Ray Pearson. We also welcome our new Membership Chair, Binay Patel, and our new Awards Chair, Sharan Thathand. Congratulations are also due to Michael Fisch, long-time Board of Directors member who was nominated to and graciously accepted the position of Emeritus Director. You can find the full list of officers, directors, and committee chairs on the last page of this newsletter.

### **ARYA TEWATIA**

Arya Tewatia is a researcher at the AMIPP Center located in the Department of Materials Science & Engineering at Rutgers University in Piscataway, NJ. His work primarily focuses on novel composite development for ballistic and structural applications using in-situ graphene reinforced polymer matrix composite technology, and the associated industrial scaling of this technology. In addition, he is interested in the relationship between properties and processing for immiscible polymer blend (IMPB) systems, including those that contain inorganic reinforcing elements, and multiscale reinforcement in IMPB systems for synergistic property enhancement. He has most recently served as 1st VP of the Palisades-NJ SPE Section, and prior to that as Secretary. Arya was also a founding member and President of the Rutgers Student Chapter of the SPE, and now serves as their advisor. Arya is active in a number of industrial organizations including AREMA and the Ceramics Association of New Jersey. Arya earned a B.S. in Materials Science & Engineering and Mechanical Engineering from Rutgers University, an M.S. in Materials Science & Engineering and will shortly finish his PhD in the same program.

### **PAUL BRIGANDI**

Dr. Paul Brigandi is Application Technology Leader for Dow Packaging & Specialty Plastics Wire & Cable business in North America based in Colleagueville, PA. Paul has experience in the power transmission and distribution as well as telecommunication markets focused on research and development of new insulation, jacket, conductive composites, and polymer modifier material developments. His technical expertise includes formulation and processing of polyolefins, elastomers, and polymer composites. He has most recently served as councilor and on the Board of Directors of the Society of Plastics Engineers Lehigh Valley Section. Paul is active in a number of industry organizations including Insulated Conductors Committee, Communications Cable and Connectivity Association, and Fiber Broadband Association technical committees. Paul earned a Ph.D. in Polymer Science and Engineering from Lehigh University and a B.S. in Chemical Engineering from the University of Delaware. He is also an active Adjunct at Lehigh University in the Material Science & Engineering department.

### **ART FINKLE**

Art is principal of the Finkle Consultancy, LLC, which helps companies find answers to challenging processing problems using his 44 years of industry experience. Art has a BS degree in Industrial Distribution from Clarkson College of Technology. He began his career at Hooker Chemicals and Plastics, selling their specialty chemical line. He also worked for M&T Chemicals (which eventually became part of Atochem, now Arkema) as global director of plating solutions. Subsequently he worked for BF Goodrich as part of their specialty group, selling, for example, emulsions for paints, coatings, adhesives

*CONTINUED ON NEXT PAGE*

## **INTRODUCING THE PALISADES-MIDATLANTIC SECTION VOLUNTEER LEADERS (CONTINUED)**

and textiles. After a short stint at a small rubber company, in 2003, Art was recruited by BASF, which needed his unique knowledge of the candy industry (chewing gum) and rubber mix chemistry. He was instrumental as BASF established its polyisobutylene (PIB) business in the US. Art retired from BASF in 2019. Art has been volunteering for the local SPE section since the early 1980s, and currently chairs the Palisades-MidAtlantic Section Finance Committee.

### **PATRICK KELLEY**

Pat has a B.S. degree in chemical engineering from Worcester Polytechnic Institute and an MBA from Rutgers University. His early work experience was with various chemical processing companies. He then spent sixteen years with Mobil Chemical Company in the plastics division where he worked mainly on the extrusion of blown film. In 1992 he left Mobil to start his own plastics processing company. Pat is the managing member of Waste Not Technologies, LLC located in Saylorsburg PA. The company makes solid recycled plastic posts for use with livestock fencing and signposts from 98% recycled plastic. Pat has three patents for plastic products.

### **RAYMOND A. PEARSON**

Ray received a B.S. degree in chemistry from the University of New Hampshire, Durham, in 1980 and a Ph.D. degree in materials science and engineering from the University of Michigan, Ann Arbor, in 1990. He joined the Materials Science and Engineering Department at Lehigh University, Bethlehem, PA in August 1990. Prior to graduate school, Ray had worked for seven years with General Electric Company: from 1980-1984 as an associate staff member at GE's Corporate Research and Development Center in Schenectady, New York and from 1984-1987 as a materials specialist at GE Plastics Europe's Product Technology Center in Bergen op Zoom, the Netherlands. Ray is currently a Professor of materials science and engineering and the Director of the polymer science and engineering graduate program at Lehigh University. Professor Pearson's research interests include all aspects of processing, deformation, yield, and fracture of polymers. He is an Executive Board Member (Vice President) of the Society of Plastics Engineers and is a member of the Board of Directors for SPE's special interest group on Additive Manufacturing.

### **BINAY PATEL**

Binay Patel brings new products based on Dyneema® fibers to market as Technology & Business Development Manager, Americas with DSM. His focus areas include lifting, offshore energy and maritime. Binay has 5+ years of experience in the UHMWPE industry ranging from start-ups to conglomerates. He holds degrees in Materials Science & Engineering (Ph.D. & M.S.) and Integrated Business & Engineering (B.S.) from Lehigh University.

### **CONGRATULATIONS TO MIKE FISCH, EMERITUS DIRECTOR OF THE SECTION**

Mike Fisch was elected as an emeritus director, in recognition of his many years of service and contributions to the Section, including serving as President in 2016, and as a board of directors' member and Education Committee member for many years. Mike joined the Palisades Section of SPE in 1981 and is a Fellow of SPE. He received a BA from Columbia, a PhD from Cal Tech, and did post-doc work at the Université de Strasbourg (with Guy Ourisson) and MIT (with Arthur Cope). Mike taught at the University of California (Irvine) and in 1972 began working for the plastics industry for Witco (which became Crompton Corp.). He has published many papers and two book chapters. "My best known contribution to plastics is the series of papers with Radu Bacaloglu on the mechanism of PVC degradation and stabilization. The emeritus director nomination is an unexpected honor," says Mike.

## **CONVERSATION WITH BRIAN GIBSON, DEI ADVISORY BOARD MEMBER**

In 2021, SPE formed an Advisory Board to support Diversity, Equity, and Inclusion (DEI) within the Society and the plastics industry. Brian Gibson, a member of our Section who is retired from a long career in the plastics industry, is on this new Board. He gave a presentation at our September Section meeting, and shared some of his thoughts for this newsletter.

SPEC Sheet: *When did you join SPE and what do you think is the best part of being an SPE member?*

Gibson: I've been a member since 1991. Most of all I have enjoyed the friendship, camaraderie and collective knowledge of my fellow Palisades section members. I also got a distinct sense of fulfillment from working on the scholarship committee. We are fortunate to be able to recognize the achievements of the next generation of 'Plastics Engineers'.

SPEC Sheet: *What led you to join the DEI advisory board?*

Gibson: Current events have highlighted the fact that, despite many advances in social relations, various biases that impede the advancement of underrepresented people still prevail in our society. In addition, studies have observed that organizations demonstrated improved financial performance in association with increased diversity and inclusion. I see opportunities for win-win solutions for businesses and the people who want to more fully participate and I hope that as member of the SPE DE&I Advisory Board, I can help to implement these solutions.

SPEC Sheet: *What are you excited about accomplishing as part of the advisory board?*

Gibson: The DE&I Advisory Board is interested in increasing diversity through the improvement of STEM education. As an example, the SPE Plastivan worked with Keith Young, creator ECOTEK Science at Work!, to educate and empower underprivileged youths in the Detroit area and inspired them to pursue science or plastics careers. Sherika Sanders and Eve Vitale are actively working to replicate that success in the McKinney, TX (Dallas) area next and eventually, throughout the country.

SPEC Sheet: *What will be happening at the upcoming DEI meetings, with the first being held in NYC (Dec 6-7, 2021)?*

Gibson: The program for the NYC meeting is still being developed and there are still opportunities for those who have experiences or interest in the advancement of DE&I to be speakers or make other contributions. If anyone has an interest in NYC or one of the other meetings, please contact me (Brian Gibson, [bgibson322@aol.com](mailto:bgibson322@aol.com)) or Patrick Farrey CEO of the Society of Plastics Engineers [pfarrey@4spe.org](mailto:pfarrey@4spe.org). Potential topics include leadership fostering DE&I, the business case for DE&I, personal stories, the language of DEI, bias, ageism, and how to be a change-maker.

Additional roundtable events are scheduled in conjunction with the following Informa Advanced Manufacturing Event locations/dates:

- April 11-12, 2022 (Anaheim, CA)
- June 6-7, 2022 (Charlotte, NC)
- November (TBD) 2022 (Minneapolis, MN).

Go to [www.4SPE.org/DEIevents](http://www.4SPE.org/DEIevents) for more info.



**WANT YOUR REPRESENTATION IN THE NEWSLETTER? SPONSORSHIPS AVAILABLE.**



1-unit size  
width: 3.687" x height 2"

2-unit size  
width: 3.687" x height 4"

3-unit size  
width: 3.687" x height 6"

4-unit size  
width: 7.5" x height 4"

1/2-pg vertical size  
width: 3.687" x height 10.25"



Check out our [Facebook page](#)

And our Website  
<https://spe-pma.org>

## ***Ken-React*<sup>®</sup> Titanates & Zirconates - Different Than Silanes.**



Figure 1 Untreated E-Glass (Silane Sized) Fibers in ETFE (ethylene tetrafluoroethylene).

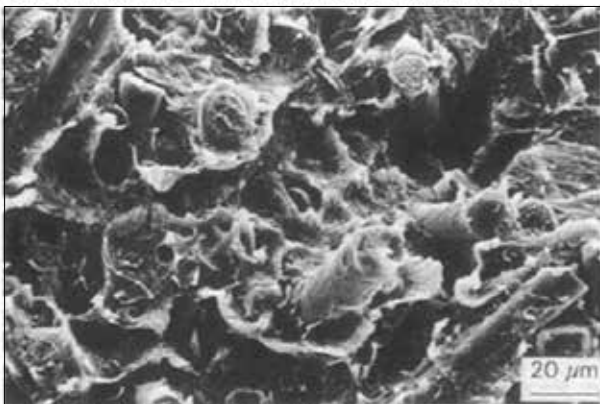


Figure 2 Ken-React<sup>®</sup> NZ<sup>®</sup> 44 Zirconate Treated E-Glass (Silane Sized) Fibers in ETFE .

**No HYDROLYSIS Needed**



[www.4kenrich.com](http://www.4kenrich.com) · [sjmonte@4kenrich.com](mailto:sjmonte@4kenrich.com)

EXTRUDED TUBING

## **EXPERTISE**

Nordson MEDICAL has the broadest, most versatile medical tubing in the industry that includes simple to complex tight-tolerance extruded tubing in a wide range of materials, including polyimide, PTFE, and fluoropolymers. With a full range of single-lumen, multi-lumen, and multi-layer tubing, we can partner with you to take your solutions further.

[nordsonmedical.com](http://nordsonmedical.com)



**BASF**  
We create chemistry

## IrgaCycle™

Enhancing the value of recycled plastics to create a sustainable and circular future

New addition to the **VALERAS™** portfolio

IrgaCycle™ additive solutions are specifically designed to improve the quality of mechanically recycled plastics.

Visit us at [www.irgacycle.basf.com](http://www.irgacycle.basf.com)

Learn more about BASF Plastic Additives at [www.plasticadditives.basf.com](http://www.plasticadditives.basf.com)

## ARKEMA PVC ADDITIVES MEAN PRODUCT PERFORMANCE

**DURASTRENGTH**  
BY ARKEMA

**PLASTISTRENGTH**  
BY ARKEMA

Selling to the extrusion and injection molding industry for over 50 years, with the continuing innovation and quality products you've come to expect from Arkema.

Durastrong® and Plastistrength® are registered trademarks of Arkema

[additives-arkema.com](http://additives-arkema.com)

**ARKEMA**  
INNOVATIVE CHEMISTRY

With over 50 years supporting North America, and now as a member of the Peter Greven Group, we offer a global reach.



Offering customizable solutions in:

Lubrication • Stabilization • Optimization



**NORAC**  
**ADDITIVES**  
A PETER GREVEN GROUP COMPANY

[noracadditives.com](http://noracadditives.com)  
870-572-9061

## BOARD OF DIRECTORS AND COMMITTEE LIST

Contact any person on this page by emailing [info@spe-pnj.org](mailto:info@spe-pnj.org)

### 2020-21 OFFICERS

President	Arya Tewatia	Rutgers University	908-565-1231
1st Vice President	Paul Brigandi	Dow	610-244-7067
2nd Vice President			
Treasurer	Francis McAndrew	Retired	908-273-3152
Secretary	Stu Kapp	Leistritz	908-685-2233
Councilor	Maggie Baumann	G.H. Associates	908-832-2207
Past President	Peggy Schipper	Performance Additives	484-846-0086

### 2021-22 DIRECTORS

Joe Duska	Mainetti	732-778-1599
Bob Kappus	R Kappus, LLC	908-619-5858
Mark Lavach	Arkema	610-878-6985
SPE Rutgers Student Chapter President	TBD	

### 2022-23 DIRECTORS

Rob Decker	Norac	215-696-2008
Andres Ginez	Lanxess	732-266-6238
Gregory Treich	Evonik	732-981-5014

### 2023-24 DIRECTORS

Art Finkle	The Finkle Consultancy	203-572-8923
Patrick Kelley	WasteNot Technologies	570-202-4503
Ray Pearson	Lehigh University	610-758-3857

### EMERITUS DIRECTOR

Jay Kotak	Retired
Michael Fisch	Retired

### COMMITTEE CHAIRS

Awards:	Sharan Thathand	
Education Chair:	Mark Lavach	610-878-6985
Endowment Fund:	J. Stephen Duerr	908-500-9333
Finance:	Art Finkle	203-572-8923
House:	Pete Hayles	732 569-2368
Membership:	Binay Patel	704-929-1272
Program:	Stu Kapp	908-685-2233
Publications:	Jennifer Markarian	908-638-5669
Social Media Mgr.	Peggy Schipper	484-846-0086
Special Events:	Jim Williamson	610-662-7779
Sponsorship:	Pete Hayles	732 569-2368