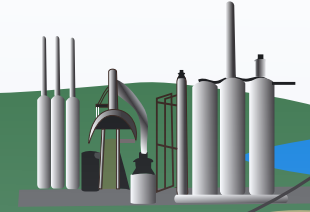


# SPEC SHEET



Bridging the Lehigh Valley and Palisades-New Jersey Regions

## SECTION NEWS

Now Accepting Scholarship Applications for 2023 – see page 6.

Thank you to our Section President, Arya Tewatia, who started off 2023 with a virtual presentation on “*Structure, properties, and processing of graphene reinforced thermoplastic polymer composites formed in-situ by a high-shear process*”. This research was completed while he was at the AMIPP Center at Rutgers. Arya is now in a new role as VP of Technology for Sicut Enterprises Ltd, currently working on recycled composite technologies for structural applications.

Our Section is very grateful to Francis McAndrew for his long term of service as our Treasurer (see page 4). Francis has been a faithful steward of the Section’s accounts for more than two decades. He recently passed the baton to Stephanie Angelo, who will serve as Treasurer for the remainder of the year. Stephanie had volunteered to be our Secretary this year, so we are now looking for a new volunteer to fill the Secretary position. Secretary is a great volunteer job for someone who would like to get to know people in section leadership—the primary role is to take notes during meetings and distribute them. We typically have a few in-person board meetings and a few virtual meetings. Contact anyone on the board or our general address: [info@spe-pma.org](mailto:info@spe-pma.org).

Next year, we hope to host a Processing TopCon. Contact Paul Brigandi, [pjbrigandi@dow.com](mailto:pjbrigandi@dow.com) if you would like to join the planning committee.

News about spring meetings will be coming soon. The Board of Directors will meet virtually in February, and we are planning an in-person section meeting for March and/or April.

Introducing our Councilor: Greg Treich



Greg Treich is currently a Technical Marketing Manager with Evonik Silanes focusing on composites, plastics, fillers, fibers, and other industrial applications out of their Piscataway NJ labs. Greg received his BS in Chemistry from RPI and PhD in Polymer Chemistry from the University of Connecticut where his focus was on the design, synthesis, and testing of high energy density dielectric materials for capacitor applications. Prior to Evonik he worked at Cytec Solvay Group as a research scientist developing and validating thermal and UV stabilizers for a variety of thermoplastic polymers. He has most recently served on the Board of Directors and as Councilor for the Connecticut Section of SPE and as Chair of SPE’s Next Generation Advisory Board (NGAB), now called the Young Professionals Committee (YPC). He is also active in both the American Chemistry Society and SAMPE.

## COUNCILOR'S MESSAGE

As many are already aware, SPE will be hosting ANTEC® 2023 at the Hilton Denver City Center, Denver, CO from March 27-30, 2023 to showcase the latest advances in industrial, national laboratory, and academic work. This year the focus will be on reengaging with in person meetings between the Board, the Councilors, and Chapter Leaders, as well as several receptions and networking opportunities. I would encourage anyone who has the opportunity, to attend ANTEC® this year. If you need more information or if you are looking for advice and assistance before attending your first SPE ANTEC®, please feel free to reach out to me directly.

SPE Councilors spent the last few months of 2022, along with Chapter and Section leaders, in a few roundtable meetings to discuss general topics relating to SPE as a society. The general decline in volunteerism across America and the world was brought up as well as its direct impact on SPE. Several good ideas were brainstormed to help overcome that including breaking up volunteer positions into more manageable activities so it is not seen as such a daunting commitment. With that in mind, we would encourage anyone who is open to getting more involved in our local or national organization should be encouraged to reach out to the board or myself.

SPE recently announced newly elected Board of Directors members as well as a newly appointed president. Bruce Mulholland will assume the position of SPE President starting on January 1st, 2023. The president's term will run from January 1, 2023, until December 31, 2023. Conor Carlin, Managing Director, Illig North America, will serve as SPE's President-Elect from January 1, 2023, until December 31, 2023, when he will start his term as SPE president starting on January 1, 2024. Additionally, three SPE Directors have been elected to the Board of Directors: Todd Bier, Account Manager, Palmer Holland, Inc.; Praveen Boopalachandran, Ph.D., Research Scientist, Dow; and Lynzie Nebel, Upstream Quote Engineer, Cytivia. SPE Directors will serve 3-year terms from 2023-2026.

As of January 1, 2023, SPE's current Board of Directors is:

Bruce Mulholland, President	Patrick Farrey, Chief Executive Officer
Conor Carlin, President-Elect	Todd Bier, SPE Director
Dr. Praveen Boopalachandran, SPE Director	Lynzie Nebel, SPE Director
James Waddell, SPE Director, Business & Finance	
Dr. Scott Eastman, SPE Director, SPE Chapters	Dr. Jason Lyons, Past President

ARKEMA



**DURASTRENGTH®**  
**PLASTISTRENGTH®**

Arkema PVC additives  
mean product performance.

Selling to the extrusion and injection molding industry for over 50 years, with the continuing innovation and quality products you've come to expect from Arkema.

[additives-arkema.com](http://additives-arkema.com)

Regards,  
*Greg Treich*  
Greg Treich

## STUDENT SECTION NEWS

### Rutgers Student Chapter—Meet the Leadership Team

**GEORGE WENSON** is the Engineering Governing Council Representative for the Rutgers Chapter of SPE. He is a senior Materials Science and Engineering (MSE) major who is incredibly passionate about working in the polymer industry and wants to get a PhD working on electroactive polymers in soft robotics applications.

**SAM LAMCHEK** is the President of the Rutgers Chapter of SPE. He is a senior MSE major and works in the AMIPP research group on polymer composites. He is interested in materials for energy applications, semiconductor processing, electronic hardware, and sustainability. Sam is currently looking for a full time job working in industry in New Jersey after he graduates.

**RIANNE DE LEON** is a junior MSE major and is our Class of 2024 Representative. Rianne advertises SPE events and other opportunities to the junior class. Outside of SPE she works in the AMIPP Research Group at Rutgers.

**HIBA KHAN** is a senior studying MSE and is serving as the Social Media Chair for SPE Rutgers. Her role is to create graphics and flyers to market SPE events via social media. She likes to understand how concepts from her degree can be applied beyond the classroom in pharmaceutical, packaging, and consumer goods industries, and is currently interning at L’Oreal.

**MEG BYNOE** is the Treasurer and a junior MSE major. She handles all financial allocations and transactions associated with the organization. She is interested in metals and additive manufacturing.

**ELISE CURREN** is the vice president of the Rutgers Chapter of SPE. She helps to coordinate events with other E-board members, and is a senior majoring in MSE with a minor in sustainability. Elise has worked for the Rutgers Energy Storage Research group since June of 2020, and has further work experience in automotive manufacturing and energy research and evaluation. After graduation, she hopes to work in renewable energy or sustainable infrastructure.

**DYLAN POKU** is the Secretary of the Rutgers Chapter of SPE. He is a senior MSE major passionate about material sustainability and is pursuing his Masters in engineering management and works in the AMIPP polymer processing lab similar to Rianne. He is constantly seeking new opportunities concerning the intersection of environmental sustainability and new innovations in material science.

#### Events:

##### General Interest Meeting

- Introduction to our organization and Eboard, as well as events planned for this semester  
SPE-MA Game Night
- Jeopardy themed game night with materials science questions Friendsgiving Study Event
- Study night for students to attend and enjoy some Thanksgiving treats SPE-MA Networking Night
- Speed networking event done with Material Advantage to network with the Rutgers MSE department faculty, grad students, and incoming sophomores

## THANK YOU FRANCIS



On behalf of the Palisades-MidAtlantic Section, we would like to thank Francis for not only service to our local sections (*Newark, New Jersey, Palisades-New Jersey and Palisades-MidAtlantic*) but to the greater plastic industry as well.

For those of you who don't know Francis, here is a bit of his history. Francis McAndrews graduated from U. Mass with a BS degree in Chemistry. He served in the Chemical Corps of the US Army for 2 years working on military fuels and lubricants. After completing his military service, he joined the Celanese Corporation in Corpus Christi, Texas which was the start of a 42 year journey where he worked on the development of CELCON polyacetal (polyoxymethylene copolymer) resin. Francis transferred to Celanese's R&D Center in Summit, NJ where he continued working with polyacetal. During his time in Summit he also worked on nylon 6/6 and polybutylene terephthalate (PBT) resins. He finished his career serving as a materials expert advising Celanese customers on material selection for new plastic parts. During his career, Francis authored or coauthored numerous articles and book chapters on polyacetals and polymer technology. Francis was awarded 17 patents most of which dealt with polyacetal resins.

Francis joined SPE in 1969 and was active in the Newark Section, serving on it's Board of Directors and as President. He also served as the Newark Section Councilor for two 3 year terms. With the merger of the Newark (*then New Jersey Section*) with the Palisades Section in 2009, Francis began his tenure as treasurer of the newly formed section, a role he continued after the merger of the Palisades-New Jersey and Lehigh Valley Sections to form the Palisades-MidAtlantic Section in 2021.

Francis was recognized for his contributions to the Society with an Honored Service Member recognition (*sponsored by the Palisades-New Jersey Section and the Engineering Properties and Structure Division*) in 2009.

**R.E. Carroll, Inc.**  
Specialty Chemicals • Petroleum Products  
Ewing • Elizabeth • Ennis • Dalton • Kent

- Organic Pigments
- Titanium Dioxide
- Stearates
- Zinc Oxide
- Calcium Carbonate
- White Oils

Phone: 1-800-257-9365  
Web: [www.recarroll.com](http://www.recarroll.com)  
Email: [plasticsinfo@recarroll.com](mailto:plasticsinfo@recarroll.com)

Check out our [Facebook page](#)

And our Website  
<https://spe-pma.org>

**spe** **ANTEC® 2023**  
Denver, CO • March 27-30, 2023

**REGISTER NOW!**

**BASF**  
We create chemistry

## IrgaCycle™

Enhancing the value of recycled plastics to create a sustainable and circular future

New addition to the **VALERAS™** portfolio

Visit us at [irgacycle.basf.com](http://irgacycle.basf.com)

Join us on the journey to create new **VALue** for plastics in the **ERA of Sustainability.**



## Ken-React® Titanates & Zirconates - Different Than Silanes.

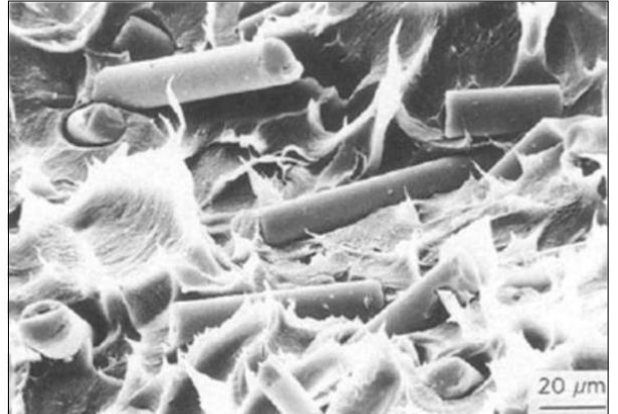


Figure 1 Untreated E-Glass (Silane Sized) Fibers in ETFE (ethylene Tetrafluoroethylene).

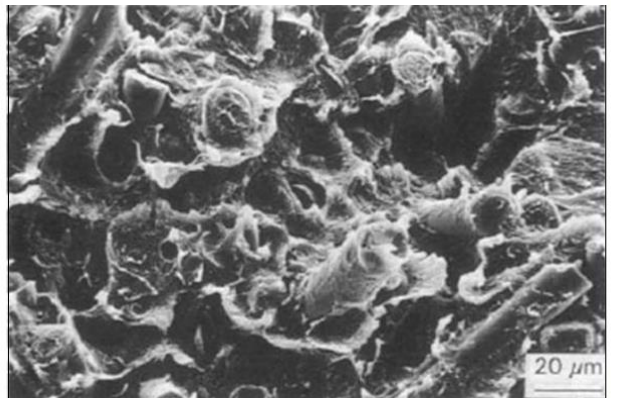


Figure 2 KenReact® NZ® 44 Zirconate Treated E-Glass (Silane Sized) Fibers in ETFE

**No HYDROLYSIS Needed**



**KENRICH**  
PETROCHEMICALS, INC.



[www.4kenrich.com](http://www.4kenrich.com) • [sjmonte@4kenrich.com](mailto:sjmonte@4kenrich.com)

With over 50 years supporting North America, and now as a member of the Peter Greven Group, we offer a global reach.



Offering customizable solutions in:

Lubrication • Stabilization • Optimization



**NORAC**  
**ADDITIVES**  
A PETER GREVEN GROUP COMPANY

[noracadditives.com](http://noracadditives.com)

870-572-9061

## 2023 SCHOLARSHIP APPLICATION NOW OPEN

The Palisades-MidAtlantic Section of the Society of Plastics Engineers (SPE) is proud to offer academic scholarships to associate members who have demonstrated excellence in various fields of study. Listed below are the available scholarships and criteria. If you, or a family member, are interested in applying, please submit the required documents by April 20, 2023. If you would like to learn more about our scholarships, which honor our Section members, you can read the history [here](#).

If you are not a current member of SPE but you are interested in joining or becoming affiliated with the SPE Palisades-MidAtlantic Section, please contact us at [info@spe-pma.org](mailto:info@spe-pma.org) or visit [www.4spe.org](http://www.4spe.org)

Scholarship Name	Scholarship Award	Number Available	Academic Criteria	Palisades-Midatlantic Section Criteria
Alva Whitney Graduate Scholarship	\$4000.00	1	Graduate study in any field. Applicant must be in good academic standing	Full, affiliate, or student SPE member, OR child/grandchild of an active Palisades Midatlantic Section Member
John Manson-Les Sperling Graduate Scholarship	\$2000.00	1	Graduate study in Physical/Chemical or Materials Science/Engineering Applicant must be in good academic standing	Full, affiliate, or student SPE member, OR child/grandchild of an active Palisades Midatlantic Section Member
Jack Ryan-Kris Mathur Undergraduate Scholarship	\$4000.00	1	Undergraduate study in any field. Applicant must be in good academic standing	Full, affiliate, or student SPE member, OR child/grandchild of an active Palisades Midatlantic Section Member
J. Stephen Duerr and John Manson-Les Sperling Undergraduate Scholarship	\$2000.00	2	Undergraduate study in Physical/Chemical or Materials Science/Engineering Applicant must be in good academic standing	Full, affiliate, or student SPE member, OR child/grandchild of an active Palisades Midatlantic Section Member
Richard Bradley Undergraduate Scholarship	\$2000.00	1	Undergraduate study in any field. Applicant must be in good academic standing	Full, affiliate, or student SPE member, OR child/grandchild of an active Palisades Midatlantic Section Member
Francis McAndrew and Sal Monte High School Scholarships	\$2000.00	2	Enrollment at 2 or 4 year college/university. Planned study in any field	Graduating High School Student at Time of Award. Child/grandchild of an active Palisades Midatlantic Section Member
Palisades-Midatlantic Scholarships	Varied	TBD	Graduate or undergraduate study in any field. Applicant must be in good academic standing	Full, affiliate, or student SPE member, OR child/grandchild of an active Palisades Midatlantic Section Member

To apply for a scholarship, please submit the documents listed below. Transcripts are confidential and not viewed by anyone outside of the evaluation team. Submit essays and any membership information by email to [mark.lavach@arkema.com](mailto:mark.lavach@arkema.com). If not using validated transcript service, submit official transcripts to Mark Lavach, Arkema, Inc., 900 First Avenue, King of Prussia PA 19406.

### Required documents:

- Official transcript (Submitted by mail or validated transcript service)
- A one to two page essay describing your contributions to your chosen field of study or how the scholarship award might help you to achieve your future goals.
- Your SPE membership number, or the name and membership number of the member to whom you are related.

*The deadline for submissions is April 20, 2023, with awards announced in May 2023*

## BOARD OF DIRECTORS AND COMMITTEE LIST

Contact any person on this page by emailing [info@spe-pma.org](mailto:info@spe-pma.org)

### 2021-22 OFFICERS

President	Arya Tewatia	Rutgers University	908-565-1231
1st Vice President	Paul Brigandi	Dow	610-244-7067
2nd Vice President	Caroline Multari	Spoke Sciences	
Treasurer	Stephanie Angelo	PMC	610-635-5359
Secretary	open		
Councilor	Greg Treich	Evonik	732-981-5014
Past President	Peggy Schipper	Performance Additives	484-846-0086

### 2022-23 DIRECTORS

Rob Decker	Norac	215-696-2008
Andres Ginez	Lanxess	732-266-6238
Gayatri Anand	Honeywell	
Brittany Walls	Alpha Gary	

### 2023-24 DIRECTORS

Art Finkle	The Finkle Consultancy	203-572-8923
Patrick Kelley	WasteNot Technologies	570-202-4503
Ray Pearson	Lehigh University	610-758-3857
Sharan Thathand	Nordson Medical	610-438-9657

### 2024-25 DIRECTORS

Maggie Baumann	G.H. Associates	908-832-2207
Mark Lavach	Arkema	610-878-6985
Stu Kapp	Leistritz	908-685-2333
SPE Rutgers Student Chapter President TBD		

### EMERITUS DIRECTOR

Jay Kotak	Retired
Michael Fisch	Retired

### COMMITTEE CHAIRS

Awards:	Sharan Thathand	610-438-9657
Education Chair:	Mark Lavach	610-878-6985
Endowment Fund:	J. Stephen Duerr	908-500-9333
Finance:	Art Finkle	203-572-8923
House:	Pete Hayles	732-569-2368
Innovation:	Maggie Baumann	908-832-2207
Membership:	Binay Patel	704-929-1272
Program:	Stu Kapp	908-685-2333
Publications:	Jennifer Markarian	908-638-5669
Social Media Mgr.	Gayatri Anand	<a href="mailto:spepalisadesmidatlantic@gmail.com">spepalisadesmidatlantic@gmail.com</a>
Special Events:	Jim Williamson	610-662-7779
Sponsorship:		

